

Agenda

- Announcements & updates
- Lecture & discussion – Elements of Art & Design
- Group activities in galleries



Announcements

- Welcome back!
- Schedule adjustments
- Docent Winter Social
- Tour schedule review
- Questions & concerns

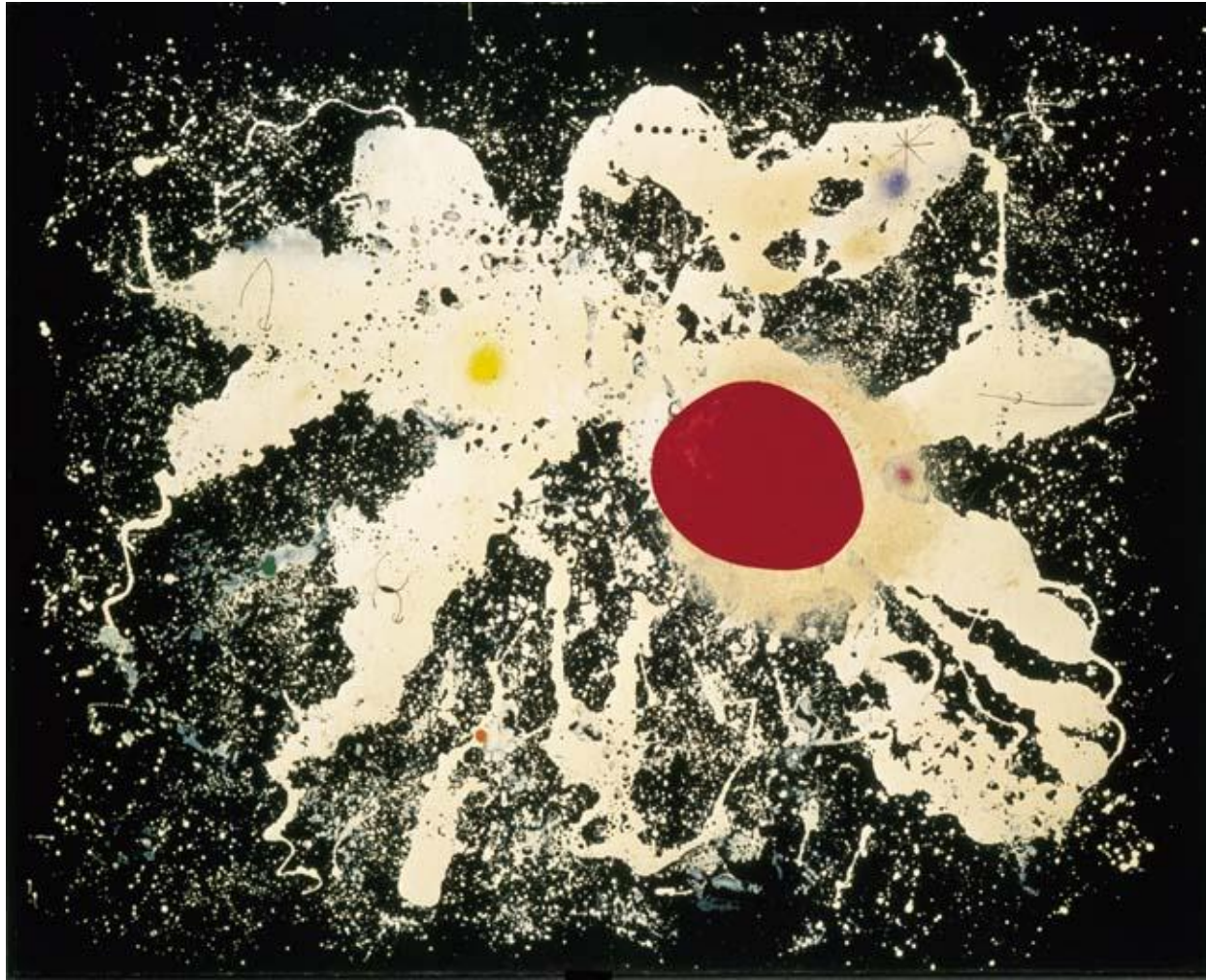


ELEMENTS OF ART & PRINCIPLES OF DESIGN



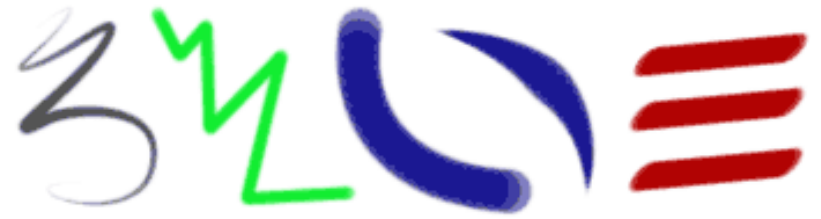


Line
Space
Shape
Form
Color
Texture



Line
Space
Shape
Form
Color
Texture

Line



The path of a point moving through space is a **line**. There are many different types of lines, not all are straight!





Line
Space
Shape
Form
Color
Texture

Space



Space is the area in which art is organized. **Perspective** describes volume of space or a 3-D object on a flat surface.



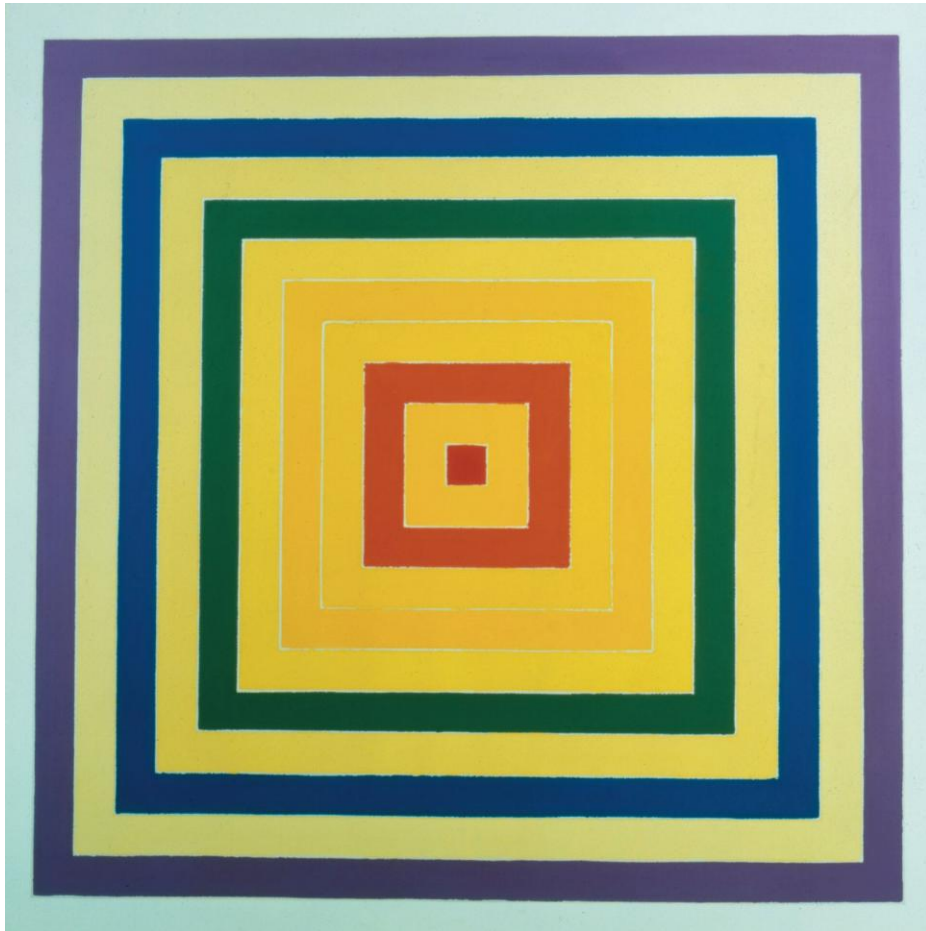


Line
Space
Shape
Form
Color
Texture

Shape & Form



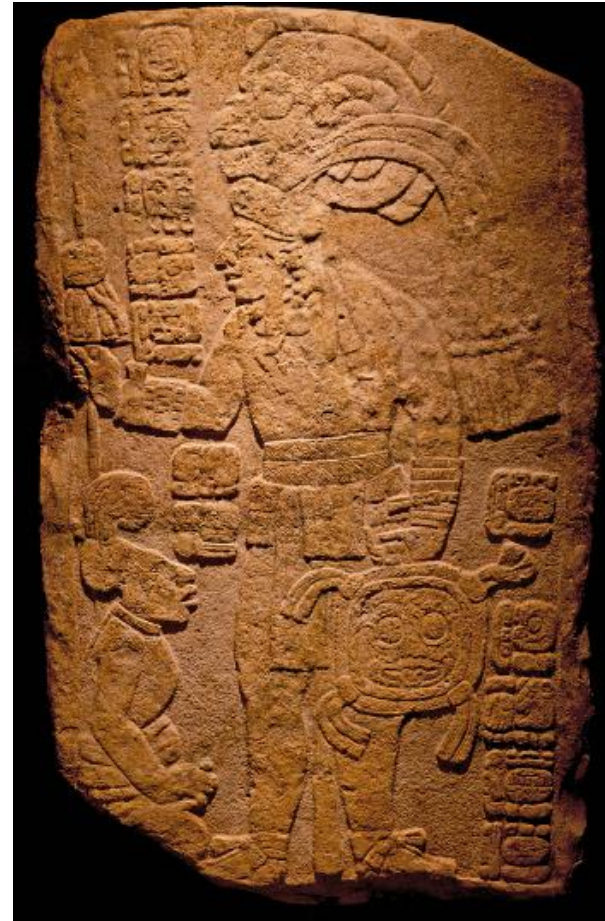
Shape is perceived as 2-dimensional, while **form** implies depth, length, and width and is perceived as 3-dimensional



Shape & Form



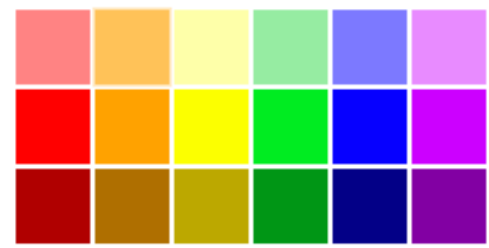
Shape is perceived as 2-dimensional, while **form** implies depth, length, and width and is perceived as 3-dimensional



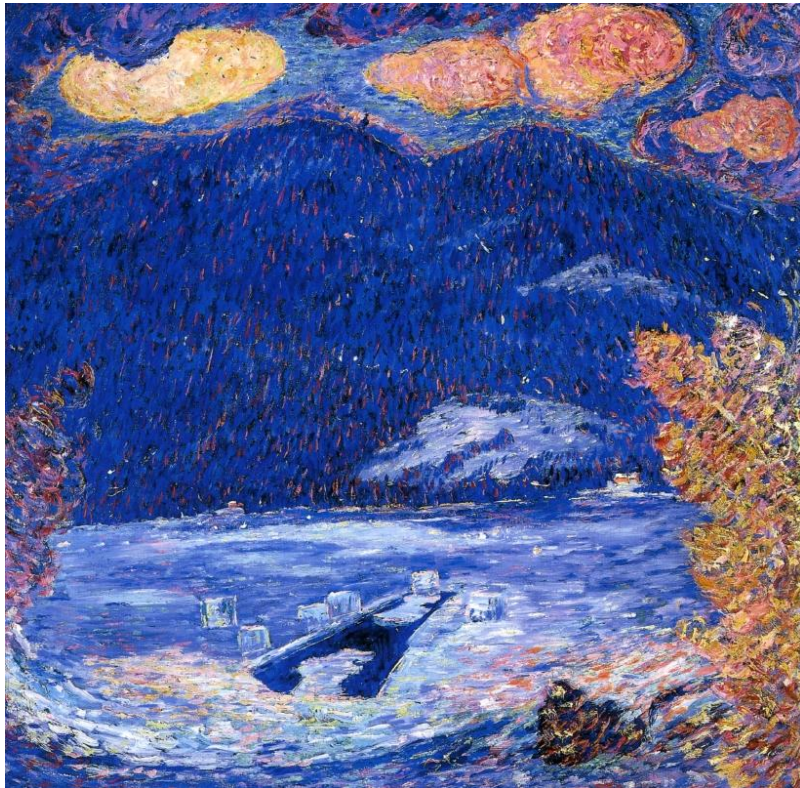


Line
Space
Shape
Form
Color
Texture

Color



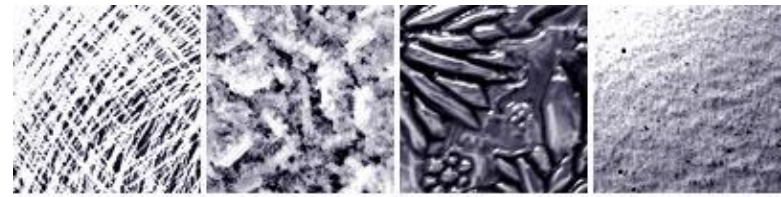
All colors are derived from the three primary colors (red, blue, and yellow) and black and white. Color has three properties: hue, value, and intensity.





Line
Space
Shape
Form
Color
Texture

Texture



The tactile (touchable) qualities of an object that are actual or implied.





Line
Space
Shape
Form
Color
Texture

ELEMENTS OF ART & PRINCIPLES OF DESIGN



Rules or guidelines on how to put the elements of design together in a composition.

Each principle helps artists create a better design.

Pattern

Emphasis

Variety

Unity

Balance

Rhythm & Movement

Contrast

Proportion

Pattern



Pattern is a repeated element of design



Emphasis

Emphasis is the created center of interest, the place in an artwork where your eye first lands



Variety

Creating interest through a combination of elements.



Unity

Unity is achieved when the components of a work of art are perceived as harmonious, giving the work a sense of completion.



Balance



Balance is the even distribution of shapes. Balance is often referred to as symmetrical (formal), asymmetrical, or radial



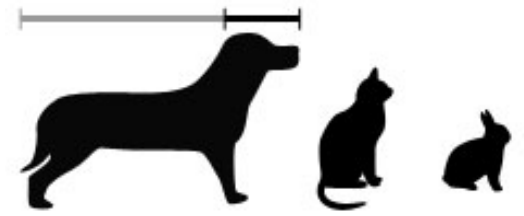


Rhythm & Movement

Rhythm or **movement** is the suggestion of motion through the use of various elements.



Proportion & Scale



Proportion is the size relationship of parts to a whole and to one another.
Scale is to relate size to a constant, such as a human body.



Assignment

- Work in five groups to visit and discuss the elements of art and principles of design in NOMA's galleries.
- Each group will have will 7 minutes at each station and then rotate in numerical order.
- When you have finished, please return to the auditorium.