

NON-PROFIT
U.S. POSTAGE
PAID
NEW ORLEANS
PERMIT #108

NOMA
New Orleans Museum of Art

P.O. Box 19123
New Orleans, LA 70179-0123

Bring art instruction
to your classroom !
For more details visit
www.noma.org/learn

NOMA

New Orleans Museum of Art



SCHOOL PROGRAM GUIDE
2015 – 2016

PLAN YOUR SCHOOL VISIT

Visits to NOMA provide opportunities for students to engage with a wide variety of art from permanent collections and featured exhibitions. Guided discussions about works of art encourage students to make observations, build connections, and think critically.

1. Select Guided or Self-Guided Visit

Guided Visits | October 1, 2015 - May 27, 2016 | Wednesdays, Thursdays, and Fridays | 9:30 and 10:30 am

Spark creative and critical thinking with a guided tour of NOMA. Knowledgeable docents engage small groups in age-appropriate discussions. Tours are interactive and conversational, and are aligned with state and national educational standards for visual arts, language arts, and social studies. Please note, for the best tour experience, groups should include no more than 80 students per time slot.

Self-Guided Visits | Year Round | Tuesday - Friday beginning at 10:00 am

Design and lead your own tour of NOMA. Visual art, language arts, history, science, and math can be explored in NOMA's extensive permanent collections, compelling temporary exhibitions, and outdoor Sculpture Garden. Use the freeto find information on selected works of art and suggestions for gallery discussions and activities.

2. Select Your Tour Topic

Choose from our thoughtfully designed tours that approach selected works from a visual art, language arts, or social studies perspective, or visit a featured exhibition. With one month's notice, you may request a customized tour.

3. Make Your Reservation

School group visits to NOMA are available Tuesday – Friday. Please arrange your visit at least two weeks in advance. E-mail grouptours@noma.org or call (504) 658-4100 to schedule your visit. Have the following information ready:

- Group leader's name
- Group leader's cell phone number
- Group leader's email address
- School's name, address, and phone number
- Number of students
- Grade level of students
- Preferred date & time and alternate date & time
- Guided Visit Tour Topic or Self-Guided Visit

Admission

Admission to NOMA is FREE for scheduled school groups. Tour must be confirmed by 4 pm the preceeding day.

Bus Reimbursement

Schools located in Orleans and Jefferson Parishes may qualify for reimbursement of travel expenses. Visit www.noma.org/learn for the bus reimbursement form.

Contact Us

Department of Interpretation
& Audience Engagement

New Orleans Museum of Art
1 Collins Diboll Circle
City Park, New Orleans LA 70124

P 504.658.4100
F 504.658.4199
education@noma.org



SCHOOL
PROGRAM
CALENDAR
OF EVENTS

2015 – 2016

NOMA

SCHOOL PROGRAM
CALENDAR OF EVENTS
2015 - 2016

TOUR TOPICS

Language Arts Approach

What's the Story?

Construct the elements of a story and guess what could happen outside of the frame. Characters, setting, and plot are identified throughout the galleries as students build stories from works of art in NOMA's collection.

Describe it!

A picture may be worth a thousand words, but how do we describe what we see? Students develop observation skills and descriptive language as they use synonyms and adjectives to describe works of art.

Social Studies Approach

Continents & Cultures

Travel the world through NOMA's galleries and meet diverse cultures. Students discuss how people around the world have used the materials available to them to express themselves and interpret their environments.

My Country, My State

Explore the history of the United States and Louisiana. Our rich cultural heritage is highlighted as students consider how artists represent place while investigating objects from different eras of our nation's history.

Visual Art Approach

Elements of Art

Line, color, shape, form, texture, and space are the building blocks of art. Students examine how artists utilize the elements to create a boundless visual language.

Methods & Materials

Investigate the relationship between an artist's ideas and techniques. Students discuss how objects are made as they compare and contrast different media such as painting, sculpture, photography, printmaking, or ceramics.

EXHIBITION TOURS

November 18, 2015 - January 22, 2016

Visions of US

Delve into representations of America on a tour of American art from the permanent collection. Early portraits through contemporary sculptures capture the American Experience.

March 2 - May 20, 2016

Self-Taught Genius

Discover clever signs, hand sewn quilts, and useful inventions by American artists with no formal training. Works from the colonial period to the present are on view in this exhibition from the American Folk Art Museum.

TEMPORARY EXHIBITIONS

Through October 11, 2015

Louisiana Parlor: Antebellum Taste & Context

Celebrating the recent acquisition of a superb Rococo Revival parlor from the Butler-Greenwood Plantation in St. Francisville, LA, this exhibition features the parlor in its entirety and illuminates the history of 19th Century revival styles.

September 25, 2015 - January 10, 2016

Traditions Transfigured: the Noh Masks of Bidou Yamaguchi

Contemporary Japanese artist Bidou Yamaguchi applies the techniques and mysterious elegance of the Noh tradition to iconic female portraits from the European art historical canon. This projection of Noh masks into new cultural dimensions extends the Japanese theatrical tradition across time and place.

October 2, 2015 - February 21, 2016

Tim Youd: 100 Novels

Los Angeles-based contemporary artist Tim Youd visits NOMA to perform the latest installment of his 100 Novels Project. Youd is traveling the country retyping 100 canonical works of American literature where they are set. His performances invite reflection on our relationship to history, memory and creativity.

October 16, 2015 - March 20, 2016

Patriot, Planter, Artist: Pierre Joseph Landry (1770 - 1843)

Pierre Joseph Landry emigrated from France at age 15 and served under Andrew Jackson in the Battle of New Orleans. After a successful career as a sugar planter, Landry began to carve wooden sculptures. In

collaboration with the Louisiana State Museum, NOMA presents the first exhibition to focus on the work of this local planter turned artist.

October 23, 2015 - January 31, 2016

Jasper Johns: Reversals

Best known for paintings of icons of American culture like flags, targets and maps, Jasper Johns is also a master printmaker. This exhibition brings together Johns' prints from the 1970s through today and shows how he revolutionized printmaking and inspired a generation of artists to rethink familiar forms.

November 14, 2015 - January 24, 2016

Visions of US: American Art at NOMA

Visions of US explores evolving ideas about American identity

from the 18th through 20th centuries. Drawn from NOMA's collection of American art, the exhibition brings together paintings, sculptures, photography and decorative arts to tell a rich and inclusive story about how we imagine and represent the United States.

February 26 - May 22, 2016

Self-Taught Genius: Treasures from the American Folk Art Museum

This exhibition includes over 100 works by self-taught American artists and explores the role of folk art in the national conversation about American identity. Quilts, needlework, ceramics, handmade books, and furniture as well as paintings and sculptures are included.

EDUCATOR EVENTS

Saturday, November 28, 2015

Saturday, March 19, 2016

Educator Appreciation Day

Teachers get in FREE with a school ID! Bring your valid school ID and get FREE admission to NOMA for you and up to 3 guests. NOMA appreciates your hard work and dedication in the classroom.

Select Tuesdays

Professional Development

Bring art into your classroom with lessons inspired by NOMA's collections and exhibitions. Workshops meet on Tuesdays from 4:30 - 6:30 pm. Come at 4:00 to enjoy refreshments and exchange ideas with colleagues.

Tuesday, October 13, 2015

Joseph Cornell

Explore the imaginative creations of American surrealist Joseph Cornell.

Tuesday, November 17, 2015

American Art

Get to know NOMA's collection of American Art.

Tuesday, April 5, 2016

Art & Ecology

Consider ways that artists respond to environmental change.

Tuesday, May 3, 2016

Renaissance Painting

Discover materials and methods used by artists from the 1400s.

CLASSROOM RESOURCES

Digital Tools

Access the online Educator Toolbox to find and exchange lessons related to NOMA's collection. Sign up at www.noma.org/learn.

Educator Guides

Use illustrated Educator Guides to learn more about NOMA's collections. Available at www.noma.org/learn.

NOMA Teaching Posters

Set 1 | Collection Highlights
Set 2 | Art of the Americas

Each durable set of posters features works from NOMA's collection on the front with interpretive materials and student writing suggestions on the back. Designed for use by teachers or students, they are FREE to schools.

Limit 1 set per school while supplies last.

STUDENT OPPORTUNITIES

NOMA Poets for Art

Saturday, April 16, 2016

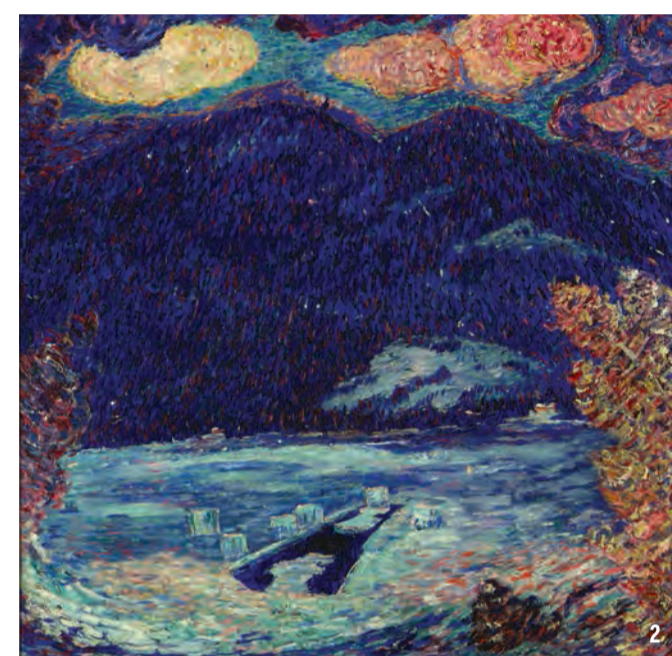
Poetry Workshop for Students in Grades 6 - 12

Applications for participants are available March 1, 2016. Contact Sheila Cork at scork@noma.org for more information.

Teen Pass

Through December 2015

Students ages 13 - 19 receive free admission to NOMA courtesy of The Helis Foundation. Pick up a Teen Pass at the front desk or at www.noma.org/learn.



ABOVE

1. Self-Taught Genius: Treasures from the American Folk Art Museum
Artist unidentified (Jefferson County, NY), *Flag Gate*, c. 1876, paint on wood with iron and brass. Gift of Herbert Waide Hemphill Jr. in honor of Neal A. Prince, 1962.1.1. American Folk Art Museum.

2. Visions of US: American Art at NOMA

Marsden Hartley (American, 1877 - 1943), *The Ice-Hole, Maine*, 1908, oil on canvas, Ella West Freeman Foundation Matching Fund, 73.2

3. Traditions Transfigured: the Noh Masks of Bidou Yamaguchi
Bidou Yamaguchi (Japanese b. 1970), *Mona Lisa*, 2003, Japanese cypress, seashell, natural pigment, lacquer. Collection of Kelly Sutherlin McLeod and Steve McLeod

4. Louisiana Parlor: Antebellum Taste and Context
Parlor at Butler Greenwood Plantation, August 2014. Photo by Roman Alokhin.

COVER

Jean Hyacinthe de Laclotte, (American, born in France, 1766 - 1829), *Battle of New Orleans*, 1815, oil on canvas. Gift of Edgar William and Bernice Chrysler Garbisch, 65.7

INSIDE, RIGHT

Lin Emery (American, b. 1928), *Wave*, 1988, polished aluminum. Gift of Frederick R. Weisman Foundation, 88.365

Education and outreach initiatives at NOMA are supported in part by the Patrick F. Taylor Foundation; the Ford Foundation; Janice Parmelee and Bill Hammack; the Rosa Mary Foundation; the Harry T. Howard, III Foundation; Chevron; Whitney Bank; the Louisiana Division of the Arts, Office of Cultural Development, Department of Culture, Recreation & Tourism, in cooperation with the Louisiana State Arts Council, and the National Endowment for the Arts, a Federal agency; the Times-Picayune Classroom Enrichment Program Fund; Elizabeth and Willy Monaghan; and generous Odyssey and GiveNOLA Day donors.

Temporary exhibitions at NOMA are supported in part by the Azby Museum Fund; Donna Perret Rosen; the Eugenie and Joseph Jones Family Foundation; Louisiana State Museum; Melanee and Steven Usdin; Mr. and Mrs. Prescott N. Dunbar in memoriam Paul M. Haygood; Carol Flower Layton Parsons; and Japan Foundation, New York.

Schedule subject to change. Please check www.noma.org for updates.