

NOMMA



Docent Program
2016-2017

AGENDA

1. Welcome and Introductions

- Susan Taylor, The Montine McDaniel Freeman Director
- Allison Reid, Deputy Director for Interpretation and Audience Engagement
- Cynthia Kolb, Chairperson, Docent Advisory Board

2. Docent Program Review

3. Materials Review

4. Assignment



The Minuet, ca. 1755, oil on canvas,
Giovanni Battista Tiepolo (or
studio), The Samuel H. Kress
Collection, 61.88

NOMA Mission and Vision

The **mission** of the New Orleans Museum of Art is to inspire the love of art; to collect, preserve, exhibit and present excellence in the visual arts; to educate, challenge and engage a diverse public.

The guiding **vision** of the New Orleans Museum of Art is to advance its position as a premier national visual arts museum vital to the cultural and educational life of our city, state and region.



Whisperings of Love, 1889,
William-Adolph Bouguereau
(French 1825-1905), oil on
canvas.

Exhibition Schedule



Through May 2017

Françoise Billon Richardson Collection of African Art

September 9, 2016 – January 1, 2017

Something in the Way: Photography and Obstruction

October 14, 2016 – January 15, 2017

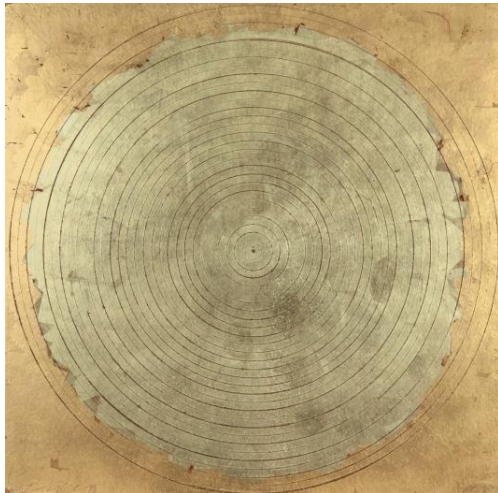
Seeing Nature: Landscape Masterworks from the Paul G. Allen Family Collection

November 3, 2016 – February 19, 2017

George Dunbar: A Retrospective

February 17 - May 21, 2017

A Life of Seduction: Venice in the 1700s



New Gallery Installations

Native American Art

Decorative Arts

Modern & Contemporary

Early Latin American

Chinese Art

Indian Art



Mini Masters

- Arts integration program for PK students
- At NOMA and in the classroom – 4 visits per year per class
- Delivered in partnership with schools serving economically vulnerable families
- Year 5 – 11 classes, 220 students



Artful Minds

- Tours for visitors with dementia and caregivers
- Currently offered monthly for Poydras Home residents
- Plans to expand program with Kingsley House



Garden Guides

- Coming soon!
- Online training plus short course
- Weekend tours and special requests



- New initiative
- Teen Pass
- Teen Squad



ADMIT ONE

Expires 12/31/2015

STUDENT NAME

SCHOOL NAME

MUSEUM HOURS

Tues. - Thurs., 10 a.m. - 6 p.m.;

Fri., 10 a.m. - 9 p.m.

Sat. - Sun., 11 a.m. - 5 p.m.

Closed Mondays and Legal Holidays

Sydney and Walda

Besthoff Sculpture Garden

Monday - Friday | 10 a.m. - 6 p.m.

Saturday and Sunday | 10 a.m. - 5 p.m.

NOMA TEEN PASS

is made possible by **The Helis Foundation**

New Orleans Museum of Art

1 Collins Diboll Circle | City Park

www.noma.org

Follow us @NOMA1910



Online Version

DAB Responsibilities

- Serve as a liaison between NOMA staff and docents
- Plans special docent events with IAE staff
- Plans optional excursions and educational field trips for docents
- Represents docents on other museum committees and reports back to docents
- Maintains account for gift and event purchases relating to the docent program (Sunshine Fund).

2016-2017 DAB Representatives

Chairperson

Cynthia Kolb

Chair-Elect

Naomi Kornman

Immediate Past Chair/ Friday Day Captain

Barbara Harris

Secretary

Mary Schumann

Treasurer

Carmen Leerstang

Wednesday Day Captain

Mary Beth Gullota

Thursday Day Captain

Pat Jackson

Adult Docent Representative

Pat Loughran

Members At Large

Joanna Giorlando

Cheryl Kain

Peggy Patterson

Docent Handbook

- NOMA's Mission & Vision (p. 2)
- Hours & Admission (p. 2)
- Privileges (p. 7)
- Commitments (p. 8 – 9)
- Expectations & Procedures (p. 10)
- Emergency Procedures (p. 12 – 13)
- Contacts (p. 14 – 15)
- Notable Dates (p. 16)



Docent Expectations

Provide excellent **visitor service**.

Follow guidelines established in **Docent Handbook** and **Volunteer Handbook**.

Attend **Docent Training** and keep up with materials.

Check **weekly email** for Docent News.

Fulfill commitment to **tour**:

- **School Docents:** 2 tours one weekday morning per week October–May.
- **Adult Docents:** an average of three times per month year-round.

Record all volunteer hours spent at NOMA.

Don't be afraid to say **"I don't know!"**

Set a good example for visitors! Maintain a distance of at least **two feet** from art objects and ensure that the tour group members maintain a safe distance from objects. Use only your hand to point at an object.

Assist security staff during an **emergency**. Please be aware of emergency procedures and calmly guide tour groups to safety.

NOMA
New Orleans Museum of Art
September 2016

Sun	Mon	Tue	Wed	Thu	Fri	Sat
			1	2	3	
4	5	6	7	8	9	10
11	12	13	14	15	16	17
18	19	20	21	22	23	24
25	26	27	28	29	30	

NOMA reserves the right to request a suspension of tours or resignation from the Docent Program.

Characteristics Successful Docents (page 5)

Personal interest in art and a love for life-long learning. Your persistent interest in learning about works of art in the permanent collection and changing exhibitions will insure that your approach remains fresh. Your enthusiasm can be contagious and will enliven your tours.

Communication and imagination. As a docent you should always try to see the museum through the eyes of the visitors. Take cues from the group and respond to their interests to facilitate engaging conversation. Remain alert to questions and comments so that you can effectively lead your group to new areas of discovery.

Flexibility. Always be prepared to make last-minute adjustments. Schedules can change, groups may arrive late and works of art may be moved — be prepared to adjust and carry on!

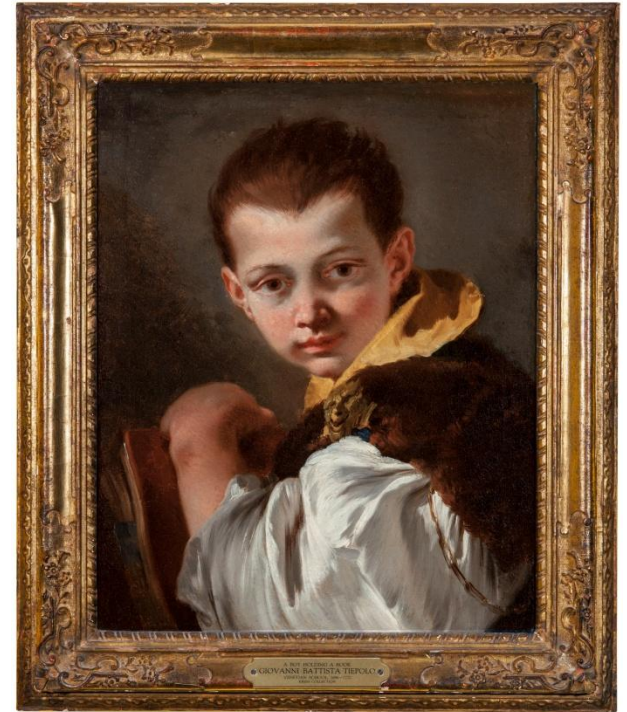
Responsibility to NOMA, the Docent Program, and NOMA visitors. Volunteer docents serve as an extension of IAE staff and may be the only personal contact a visitor makes with NOMA. The impression you make on visitors can influence their feelings about NOMA, about fellow docents, and about art in general. Docents rely on each other to arrive promptly and ready to tour so that groups can remain small and personal.

- Expectations (p. 4)
- General Volunteer Guidelines (p. 5)
- Dress Code (p. 6)
- Removal from Active Service (p. 6)
- Safety and Security (p. 7)
- Customer Service (p. 10 – 11)
- General Museum Policies (p. 12 – 13)



Portrait of Marie Antoinette, Queen of France, ca. 1788, oil on canvas, Elisabeth Louise Vigée Lebrun, (French, 1755 – 1842), Women's Volunteer Committee Fund, 85.90

1. Meet most Mondays from 10 am – 12 pm
2. Topics
 - Key Works from the Collection
 - Exhibitions
 - New Installations
3. Optional Opportunities
 - Library Research 101
 - Workshops
 - Social outings
4. Docent Website updated weekly
5. Docent News sent weekly on Monday



Boy Holding a Book (Portrait of Lorenzo Tiepolo), ca. 1747 - 1750, oil on canvas, Giovanni Battista Tiepolo (or studio), The Samuel H. Kress Collection, 61.87

Docent Tours

SCHOOL TOURS

Wednesday – Friday at 9:30 & 10:30

MINI MASTERS

Tuesdays & Wednesdays at 9:30 & 10:15

ARTFUL MINDS

Tuesdays at 10:00

ROAD SCHOLARS

Wednesdays & Thursdays at 10:00

ADULT GROUPS

by request

PUBLIC TOURS

Sundays at 2:00

Some Wednesdays at 12:00

Saturdays at 2:00 in the Sculpture Garden



*Scramble: Ascending Yellow Values, Descending Spectrum, 1978, Frank Stella (American, born 1936), Acrylic on canvas
Promised gift of Donna Perret Rosen and Benjamin M. Rosen, EL.2011.234*

Docent Resources

1. Docent Handbook
2. Volunteer Handbook
3. School Program Brochure
4. Label copy and other handouts
5. Docent Portal www.noma.org/docents
6. Docent News
7. Educator Toolbox & Classroom Resources
8. Selected articles
9. Suggested online research



Docents

Docent Tours & Training

Docent News & Events

Recent News & Press

[Ten Years After Katrina, New Orleans Museums Reckon With Recovery](#)

[Forget The Wreckage: Museums' Katrina Shows Look At How City Has Moved On](#)

Docents

Thanks for all you do! We could not reach so many visitors without you!



Classroom Resources



- NOMA Teaching Posters
 - Set 1 | Collection Highlights
 - Set 2 | American Art at NOMA
- Educator Toolbox
- Educator Guides
- ARTtabs & NOMA Mobile Guide
- www.noma.org/learn

Educator Toolbox

Participate in our online community for educators. NOMA's Educator Toolbox is a place to exchange ideas and teaching materials related to NOMA's permanent collection and exhibitions.

Major support is provided by the Patrick F. Taylor Foundation. Additional support is provided by the RosaMary Foundation.

WITH THE EDUCATOR TOOLBOX, YOU CAN:

 **Search for lessons by academic subject or grade level.**

 **Share lessons related to works of art at NOMA.**

 **Create a gallery of student work to illustrate your lessons.**

 **Comment with suggestions for adapting lessons or improving the Educator Toolbox.**

Educator Toolbox

All Lessons

Submit A Lesson

Bookmarked Lessons

Submit Student Artwork


Send Us Feedback

Student Galleries



- Installed in galleries
- Web-based
- Deep dive into select works
- Visitor chooses path
- Optimized for tablet

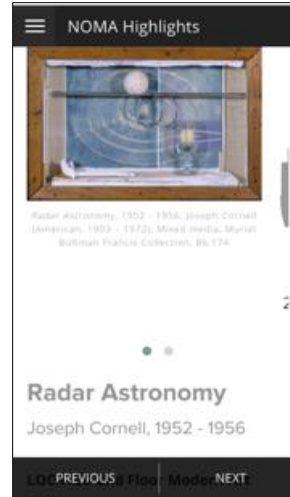
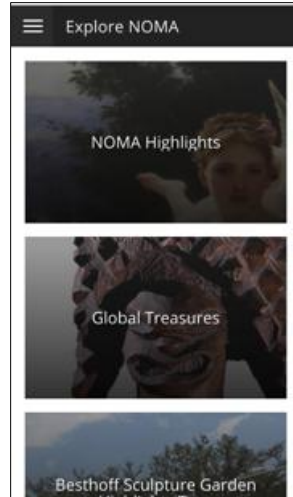
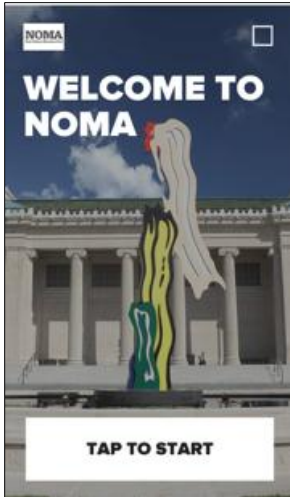
◀ FRAME & GILDING 🏠



The gold of the frame and background create an otherworldly and sumptuous environment for the Madonna and Child and saints. The gold color is achieved through gilding, a process which attaches thin sheets of gold leaf to a panel prepared with a mixture of animal glue and red clay (called bole). The excess gold leaf is then gently brushed away and the gilded areas are polished to a high, reflective finish.

PUNCHWORK > TEMPERA > ⓘ

Mobile Guides & Audio Tour



- Web-based
- Visitor uses own device
- Selection of tours available
- Access by web, text, or QR
- Available on- or off-site

Public Programs




- Friday Nights at NOMA
- Lectures & Artist Perspectives
- Public Tours
- Festivals
- StoryQuest
- Studio KIDS! & Summer Art Camp
- Theater
- Film Series
- Arts & Letters series & Poetry Month

Online Materials

Subjects ▾ 🔍 KHANACADEMY New user / Sign up

< LATE GOTHIC ART IN ITALY
Florence, the Late Gothic

- Florence in the Late Gothic period, an introduction
- Dante's Divine Comedy in Late Medieval and Early Renaissance art
- Cimabue, Santa Trinita Madonna
- Giotto, The Ognissanti Madonna
- Giotto, Ognissanti Madonna (quiz)



Giotto, Arena (Scrovegni) Chapel (part 1)

About Transcript

Giotto's Arena (Scrovegni) Chapel, Padua, c. 1305, Part 1 Speakers: Dr. Steven Zucker &

<https://www.khanacademy.org/humanities/art-history>




THE MET

Heilbrunn Timeline of Art History

ESSAYS WORKS OF ART CHRONOLOGY 🔍

Yoruba Art

ESSAYS (10) WORKS OF ART (8) CHRONOLOGY (5)



RELATED KEYWORDS

— ART MOVEMENT / STYLE

- Akan Art
- Asante Art
- Bamum Art
- Baule Art
- Boki Art
- Dan Art
- Edo Art
- Ejagham Art
- Ewe Art
- Fon Art
- Fulani / Fulbe Art
- Lower Niger Bronze Industry
- Senufo Art

© 2000–2016 The Metropolitan Museum of Art

ARTISTS / MAKERS KEYWORDS About Rights and Permissions Print Share

www.metmuseum.org/toah/

Assignment

1. Fill out availability form, sign agreement & return both
2. Read Docent Handbook
3. Choose 1 – 3 “Key Works” for next week’s session and research using Kahn Academy and/or a museum website (Met or other).



mini MASTERS

- Year 5
- 11 classes, 220 students
- 4 visits to NOMA (1 visit to Sculpture Garden)
- Students receive arts integrated lessons pre- and post-visit
- Teaching posters correspond to Pre-K themes
- 30 minute themed tours correspond to classroom lessons
- Tour descriptions and guiding questions will be provided

