



Overview: 19th-century Decorative Arts

Mel Buchanan

New Orleans Museum of Art



Overview: 19th-century Decorative Arts



01.585.a,b



Minton & Co. (English, Staffordshire), 1880

FEDERAL (NEOCLASSICAL) / 1790-1820



Gilbert Stuart, *Dolley Madison*, 1804 (White House)



John Singleton Copley, *Mrs. Skinner*, 1772 (BostonMFA)



Copley, 1772



Stuart, 1804

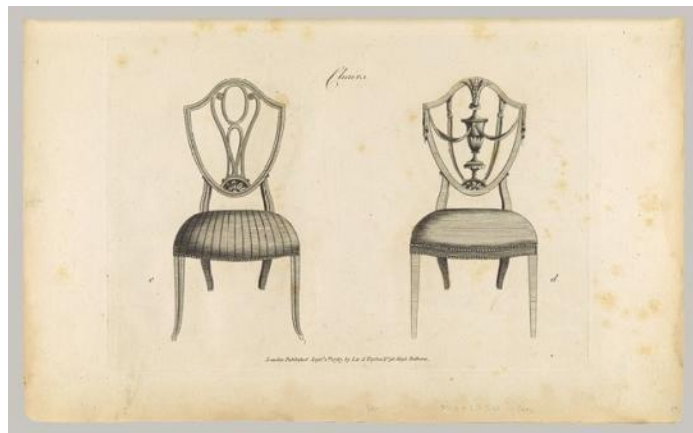
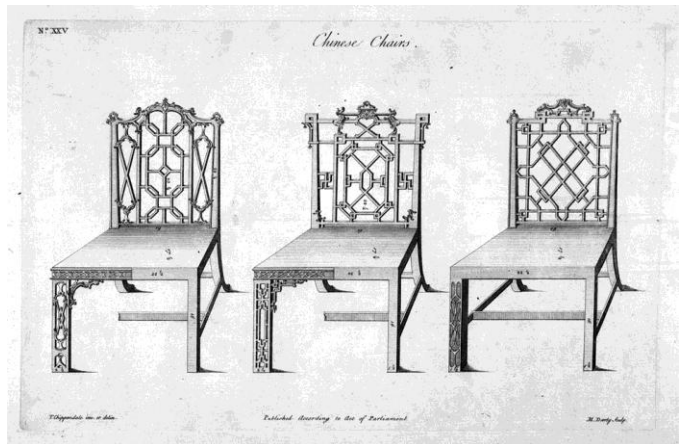
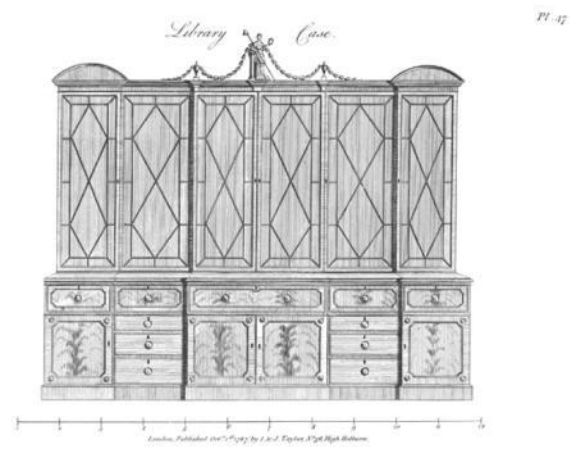


NOMA



French, ca. 1765 / 1695

American, ca. 1810



Chippendale, 1754

Sheraton, 1791

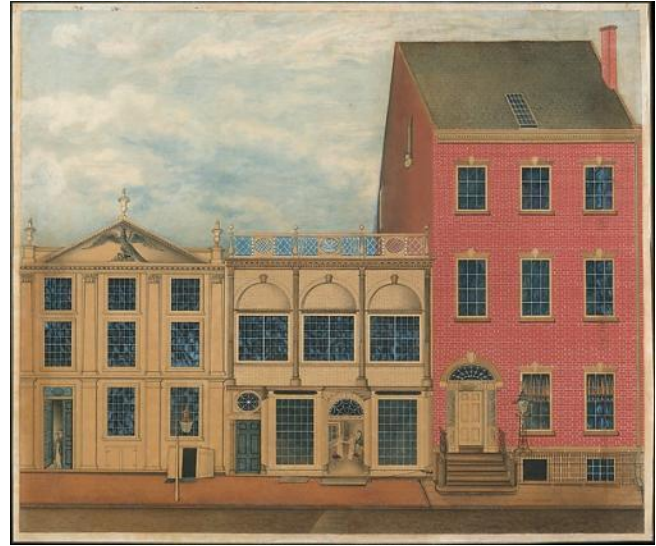


NOMA



French, ca. 1765 / 1695

American, ca. 1810



Duncan Phyfe, c. 1810, Phyfe Shop NYC, 1816 (the Met)



Craig House period room (Baltimore), c.1810 (Met)



Henry Sargent, *The Dinner Party*, 1821. (Boston MFA)



Thomas Jefferson, Monticello (Virginia), 1772



Davenport House (Savannah, Georgia), 1820



Thomas Affleck, Philadelphia, 1770-1790 (Kuntz)



NOMA

Creole (Louisiana), Bedstead, c.1800-15 (Kuntz)

NOMA



Creole (Louisiana), Campeche chair, c.1820-30 (Kuntz)



Bakewell and Page (Pittsburgh), c.1810



Josiah Wedgwood (English, Staffordshire), c.1810

GREEK REVIVAL (NEOCLASSICAL)

EMPIRE STYLE / after 1810



Charles-Honoré Lannuier, 1817 (Met)



Parthenon (Athens, Greece), 438 b.c.e.



Lanier Mansion (Madison, Indiana), 1844

NOMA



15.27

Jehan Georges Vibert, 1880



John Finlay, 1815-20 (Met)



Lambert Hitchcock, 1825-35 (Boston MFA)



Mid-Atlantic, c.1830 (Met)



96.602.a.,b



Paul Storr (London), c.1810

NOMA



Josiah Wedgwood (English, Staffordshire), c.1820



Josiah Wedgwood (English, Staffordshire), c.1820

GOTHIC REVIVAL / 1830-60



Reims Cathedral (France), 1275

DESIGN II.

A COTTAGE IN THE ENGLISH, OR RURAL GOTHIC STYLE.



FIG. 2.

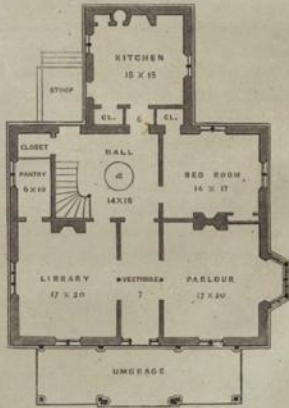
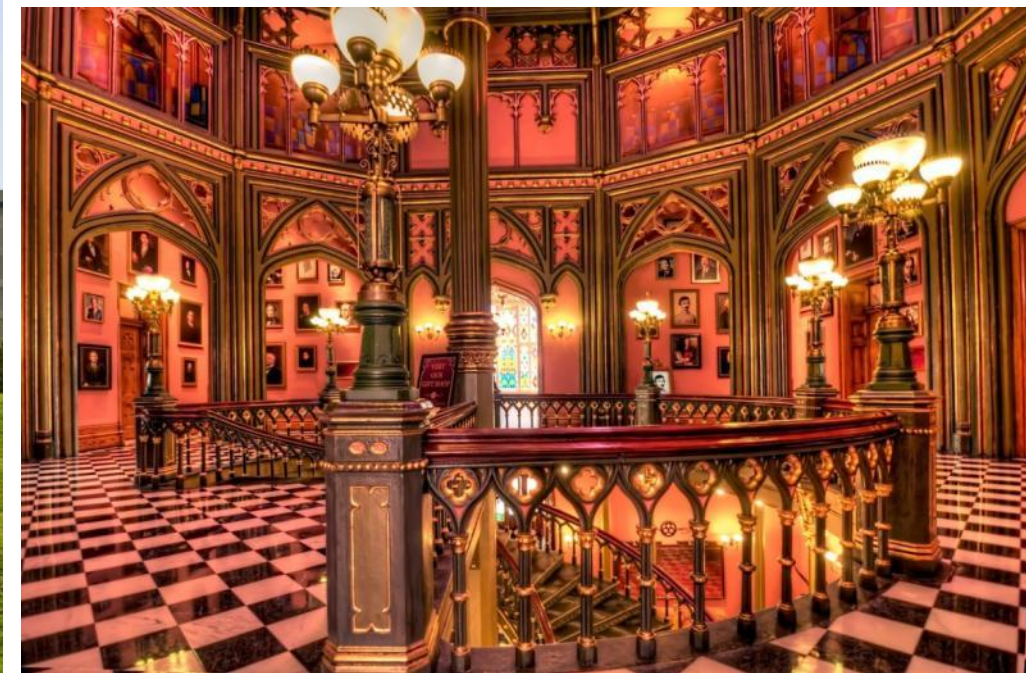
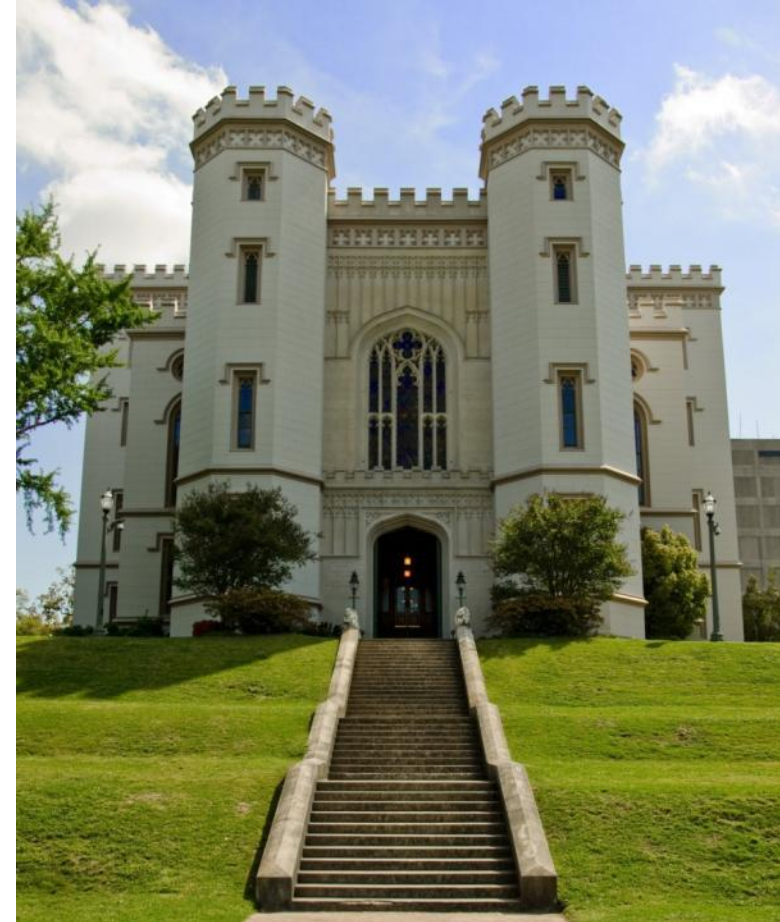


FIG. 3.



Andrew Jackson Downing, 1842. Roseland Cottage.



Old Louisiana Capital (Baton Rouge), 1847



American (New York or New Orleans), c.1850



New York, c.1860 (Met)

NOMA



Jacob Petit (Paris), c.1830-50



NOMA

Bohemian, 1845-60



08.454



American, c.1830



08.61

NOMA

American, c.1850-60



86.430.a.,b



Boston & Sandwich (Massachusetts), c.1835-60

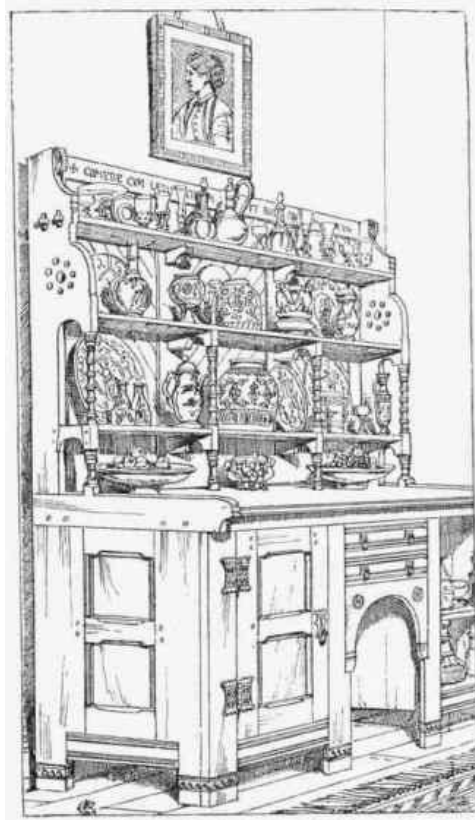
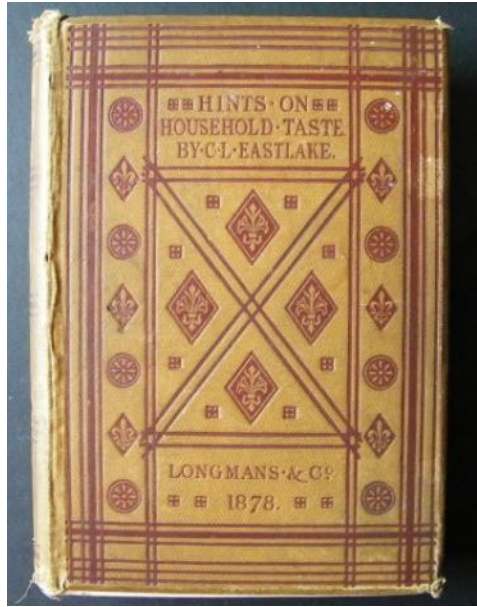


NOMA

Dante Rossetti (British), Lady Lilith, 1867 (the Met)



Kimbel & Cabus (New York), c.1877 (Met)



Charles Eastlake, *Hints on Household Taste*, 1868

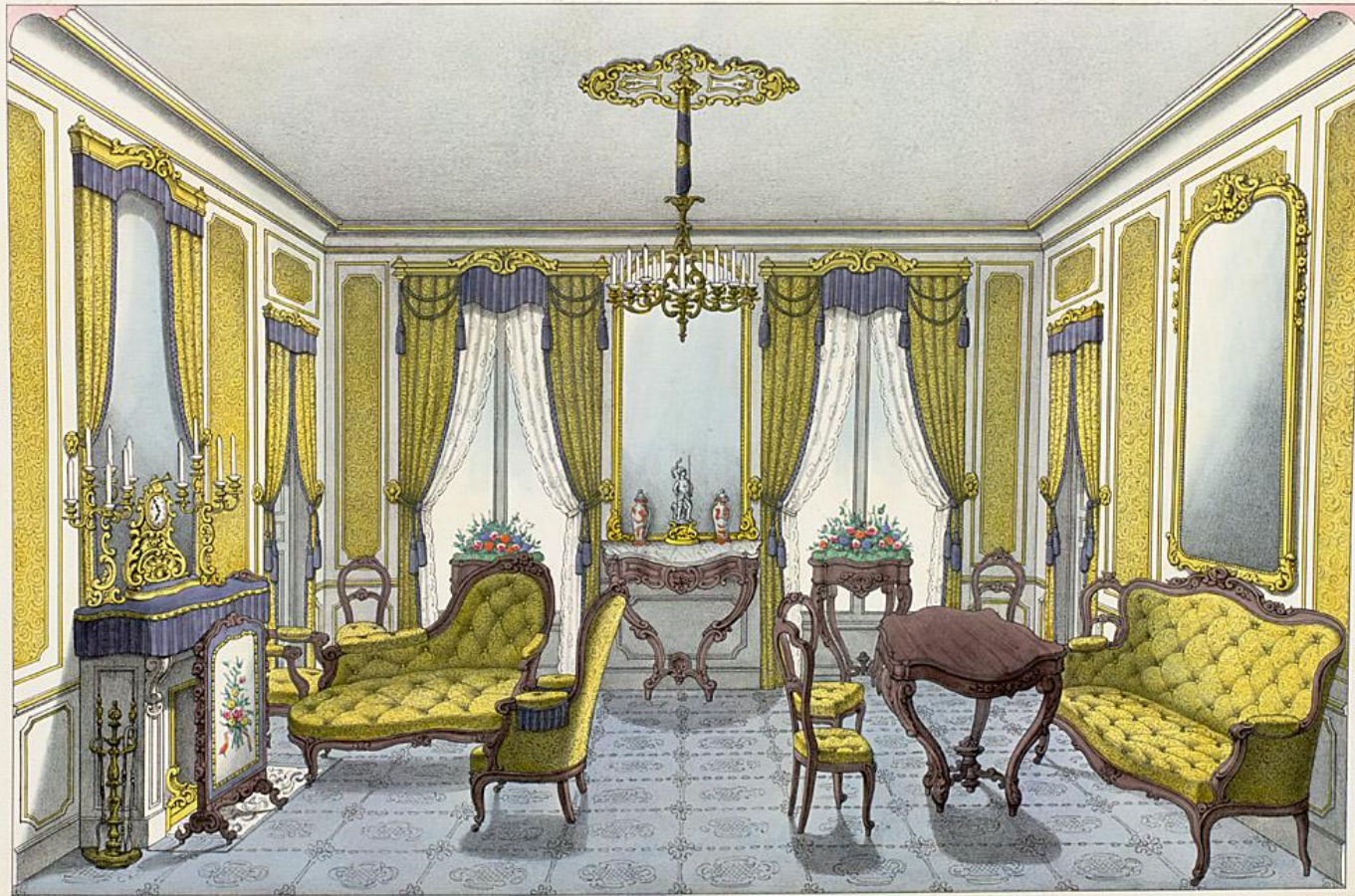
ROCOCO REVIVAL / 1850-70



Fragonard, *The Swing*, 1767 (Wallace Collection)



Nymphenburg Palace (Munich, Germany), 1737



Rococo Revival plate, *Le Garde-meuble*, c. 1835



Louis-Philippe, 1842 (King of France, 1830-48)



Rococo Revival plate, *Le Garde-meuble*, c. 1835



Crystal Palace Exhibition (London), 1851

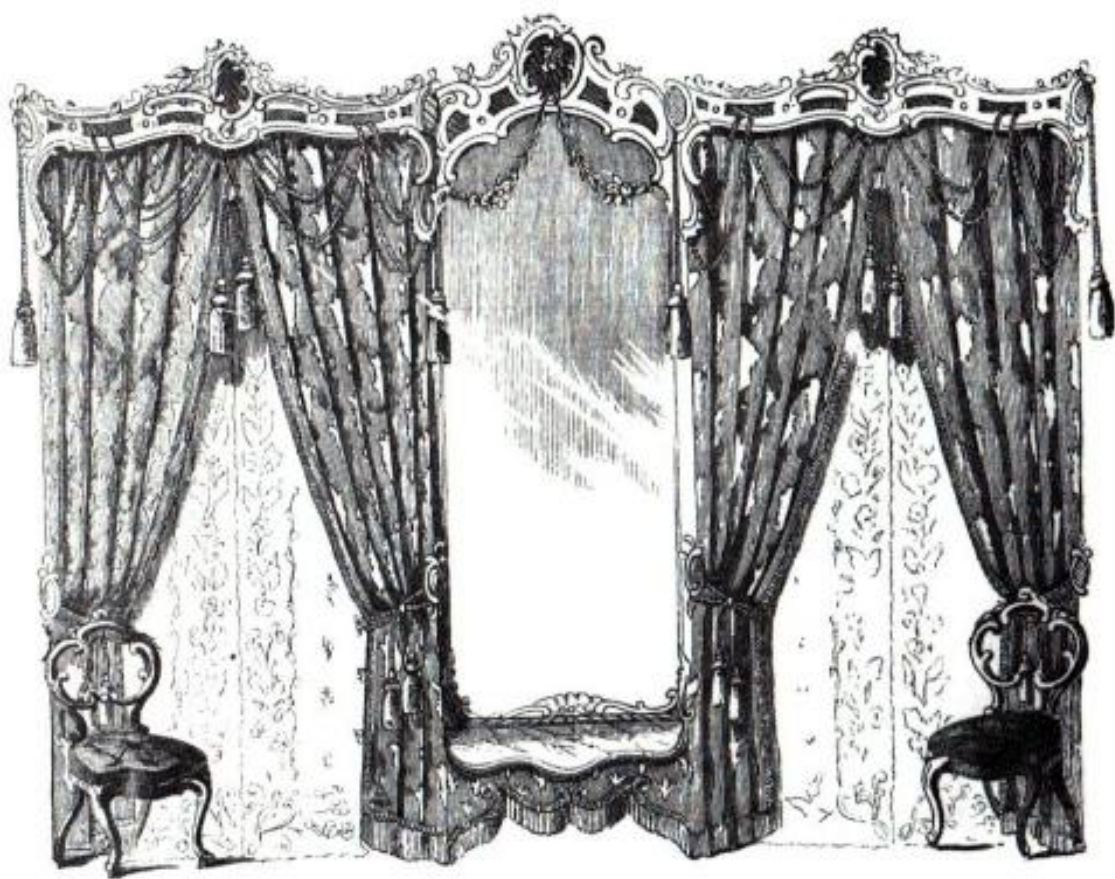


Crystal Palace Exhibition (London), 1851 / Warren (US)

NOMA



Butler-Greenwood Parlor, 1852/59/61



Godey's Lady's Book, 1854



John Belter (New York), 1850-60 (Met)



John Belter (New York), 1850-60 (Met)



NOMA

Jacob Petit (Paris), c.1850-65

NOMA



B1.400.a.c

Elkington & Co (Eng) for Kenner Plantation, c.1850



Alexander Roux (New York), c.1853 (Met)



Sevres (France), 1855-61 (Met)



NOMA

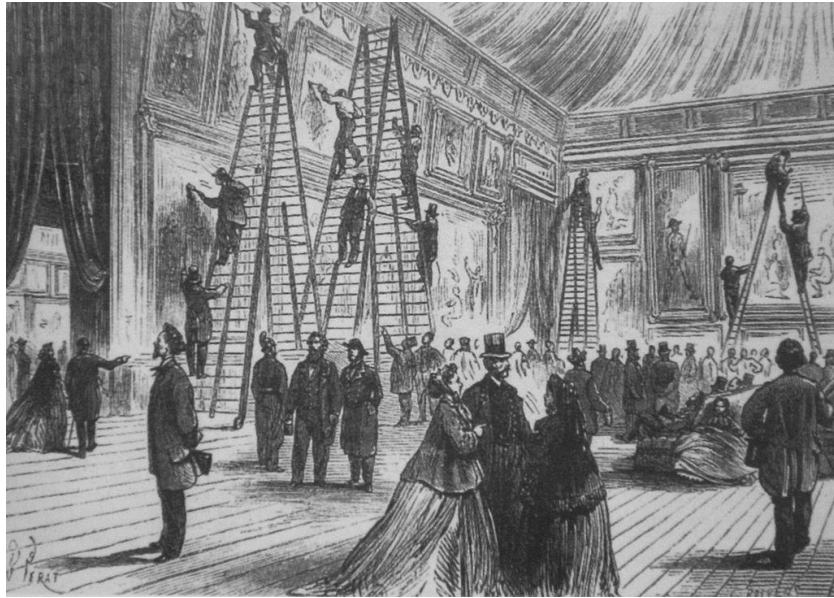
Jacob Petit (Paris), c.1850



NOMA

European, 19th century

OTHER REVIVALS / “Academic”



French Academy salon and class, 1865 / late 1800s



NOMA

William-Adolphe Bouguereau, 1889



NOMA

Frank Markham Skipworth, 1889

NOMA



Jean-Léon Gérôme (French), c.1880-90



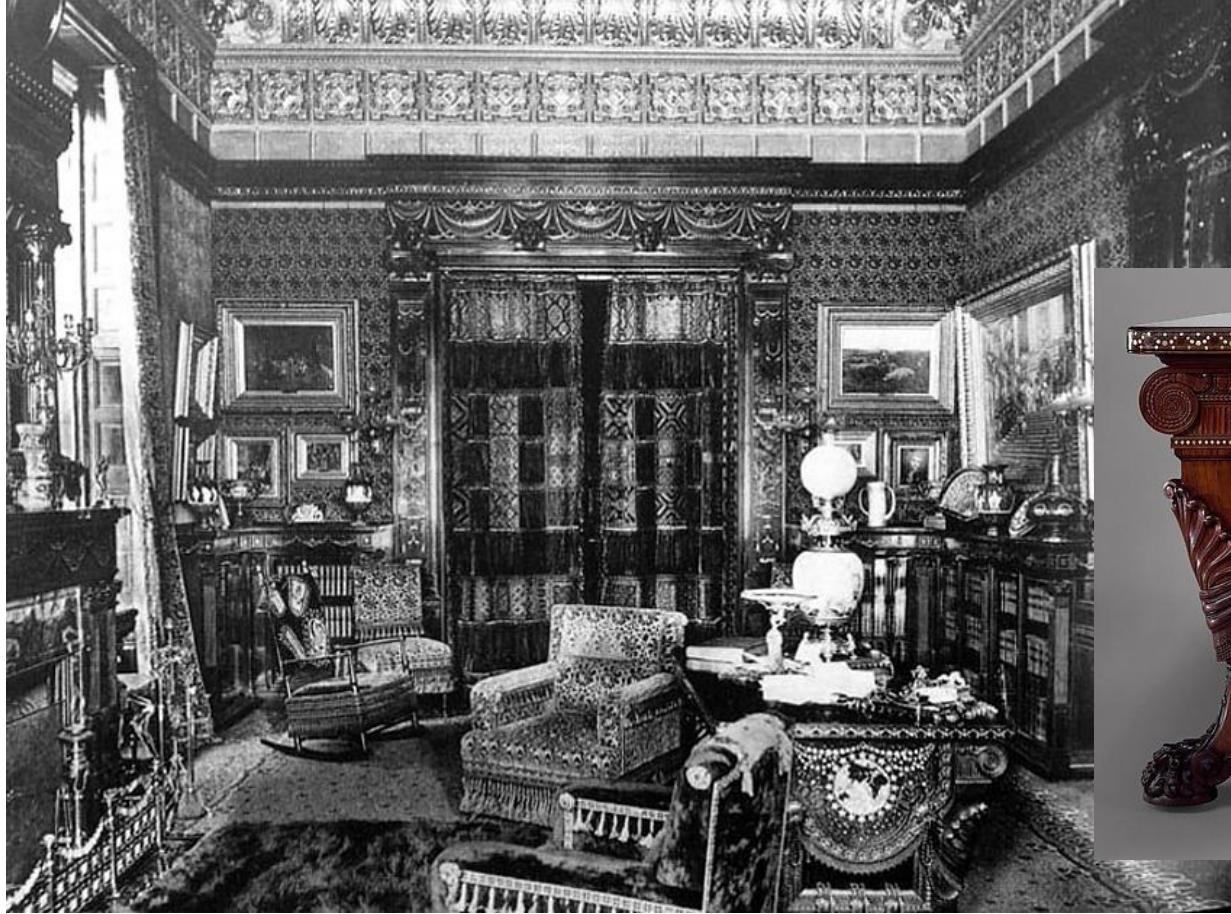
01.585.a,b



Minton & Co. (English, Staffordshire), 1880



Herter Brothers (Vanderbilt Library), 1882

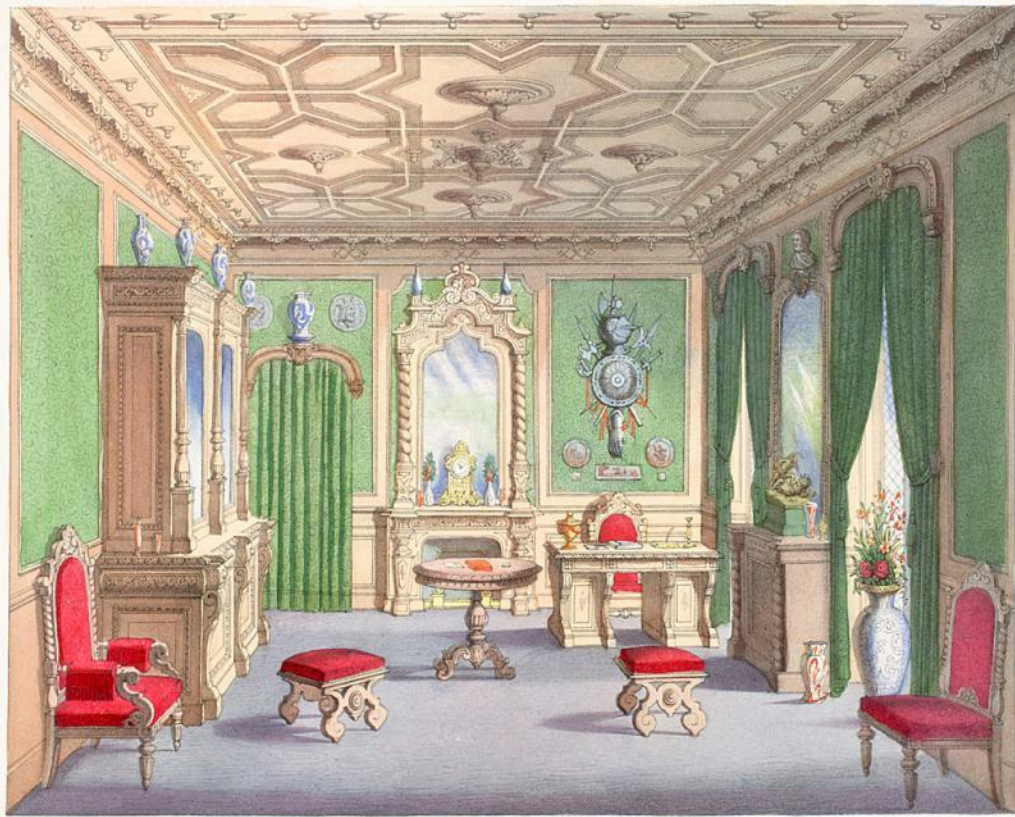


Herter Brothers (Vanderbilt Library), 1882 (the Met)

OTHER REVIVALS / “Renaissance Revival”



Bassen, *Renaissance Interior with Banqueters*, 1618



D. Guilmard inv.

Karré lith.

Cabinet de travail.

Renaissance Revival plate, *Le Garde-meuble*, c. 1850



Herter Brothers (Thurlow Lodge mirror), 1872 (LACMA)



Trinity Church (Boston), 1872



Alexander Roux (New York), c.1866 (Met)

NOMA



Pottier & Stymus (NYC), c.1865-70



-Attributed- Pottier & Stymus (NYC), c.1870 (Met)



-Attributed- Pottier & Stymus (NYC), c.1870 (auction)

NOMA



French and Austrian, c.1865-75



NOMA

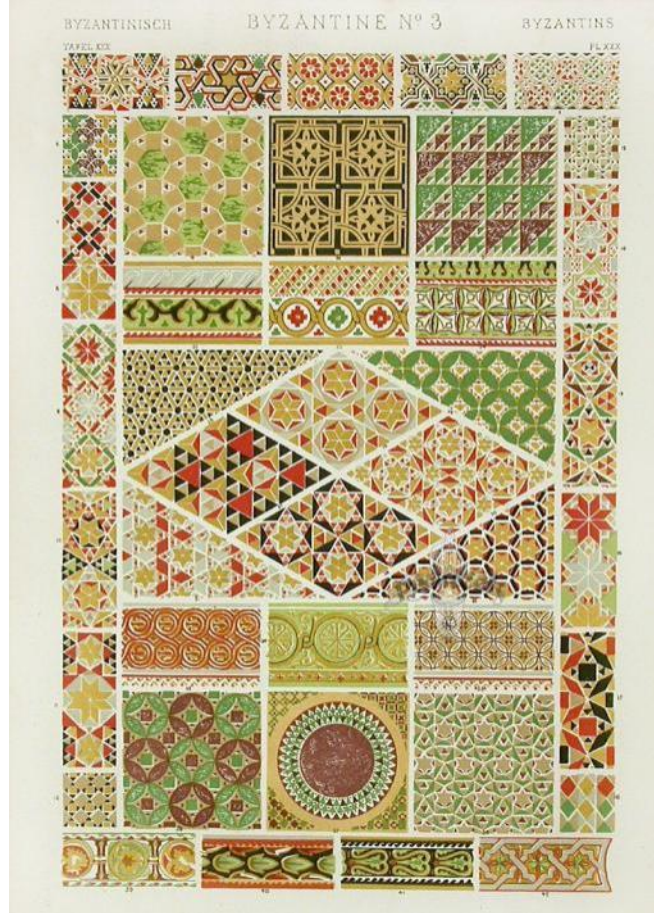
Sevres (French), designed 1880

NOMA



Paris, c.1830

“ARTISTIC” / AESTHETIC DESIGN / after 1851



Owen Jones, *Grammar of Ornament*, 1856



James McNeill Whistler "Peacock Room," 1877 (Freer)



Furness design / Pabst (Philadelphia), c.1874-77 (Met)



NOMA

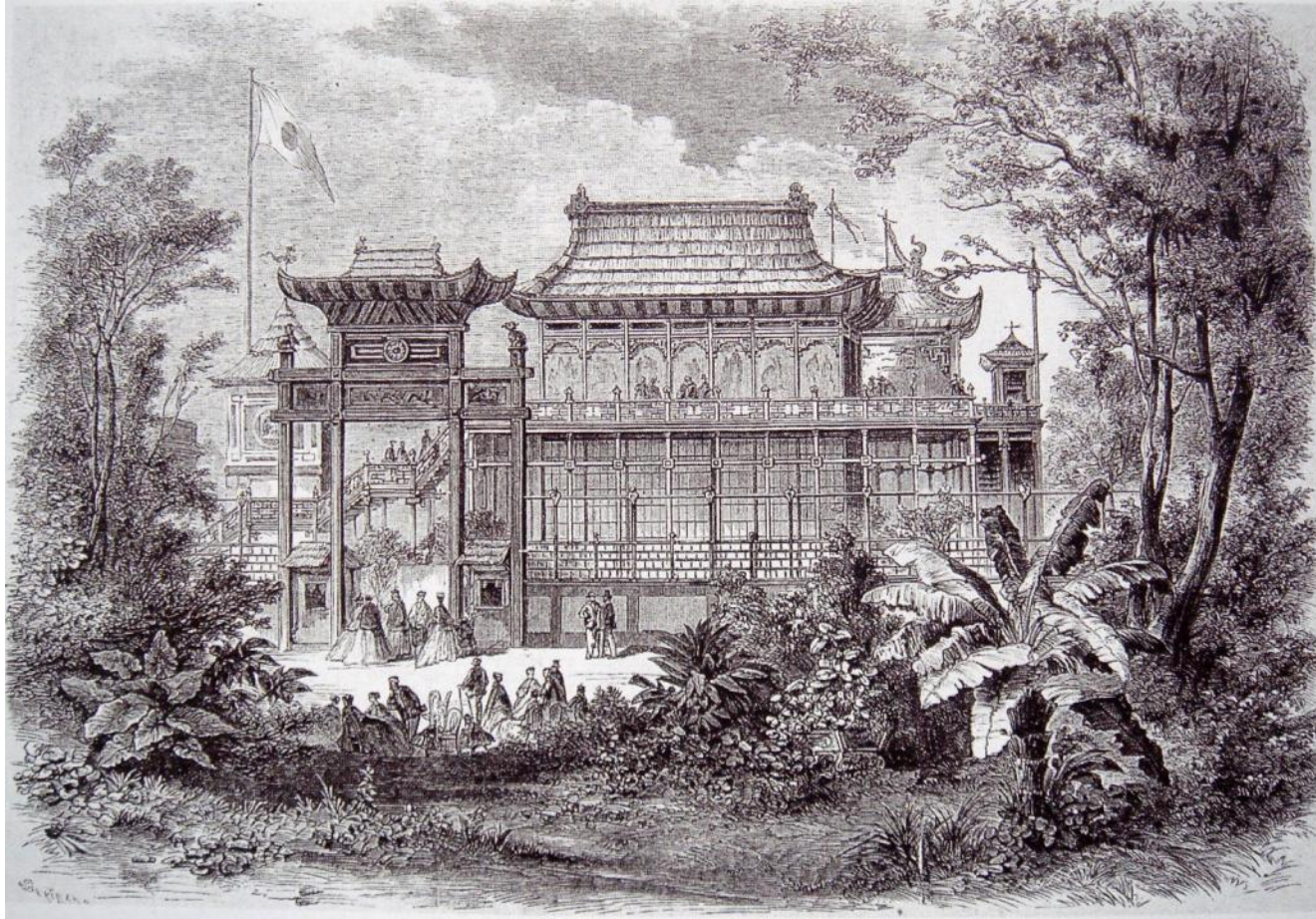
Louis Sullivan, Chicago's Caron Pirie Scott, 1899



Christopher Dresser (English), 1886 (Met)



Christopher Dresser (English), 1881



Japan & China World's Fair Pavilion (Paris), 1867



NOMA

A. and H. Lejambre (Philadelphia), c.1880

NOMA



Royal Worcester (Staffordshire, Engl), c.1880

NOMA



J. Vieillard & Cie (French, Bordeaux), c.1880



George Hunzinger (New York), c.1875



George Hunzinger (New York), c.1876-85 (Met)

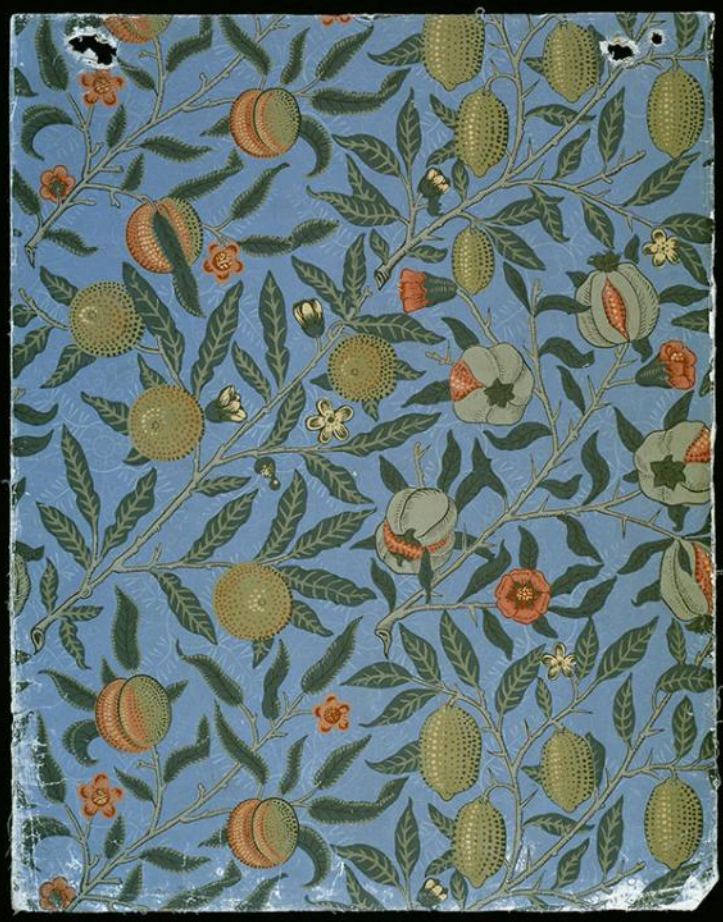


Mt. Washington (New Bedford, MA), 1894-96

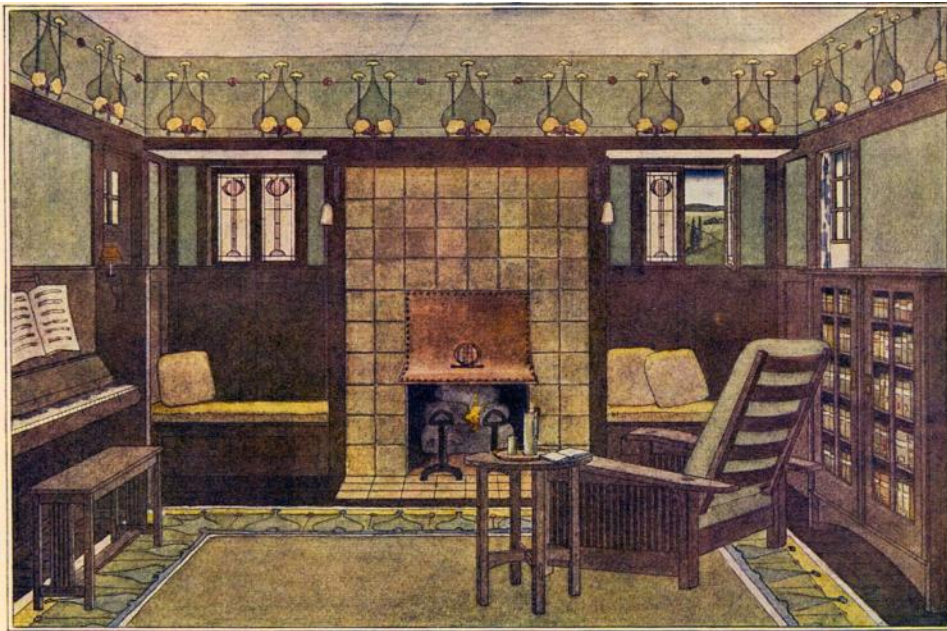
DESIGN REFORM – Arts & Crafts Movement



William Morris, *Red House* (England), 1860



William Morris (England), 1866 and 1864 (V&A)



Gustav Stickley, *The Craftsman*, 1909

NOMA



Newcomb Pottery, 1902-03

DESIGN REFORM – Vienna Secession / 1897

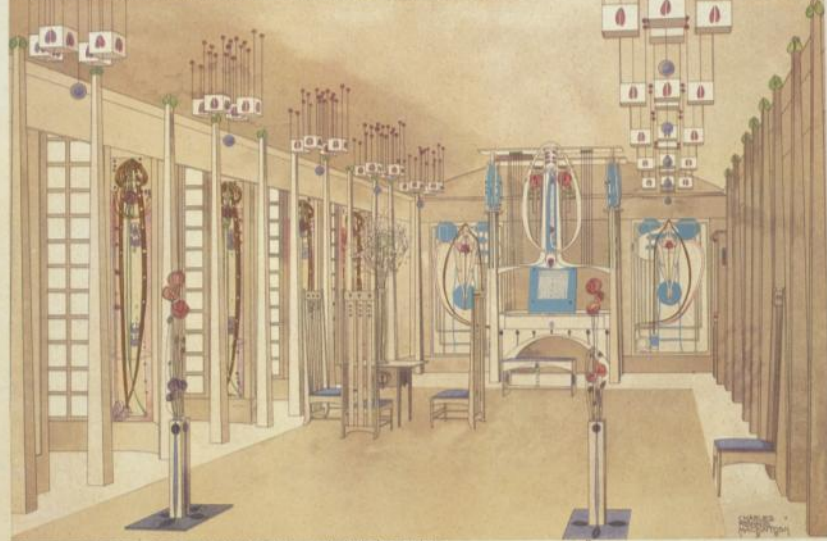


Vienna Secession posters, 1902



Josef Hoffmann (Weiner Werstatte), 1902-1913

MIT WITTEWEIS FÜR EIN HERZOGTUMS WOHNAUF EINE KUNSTFREUNDLICHES

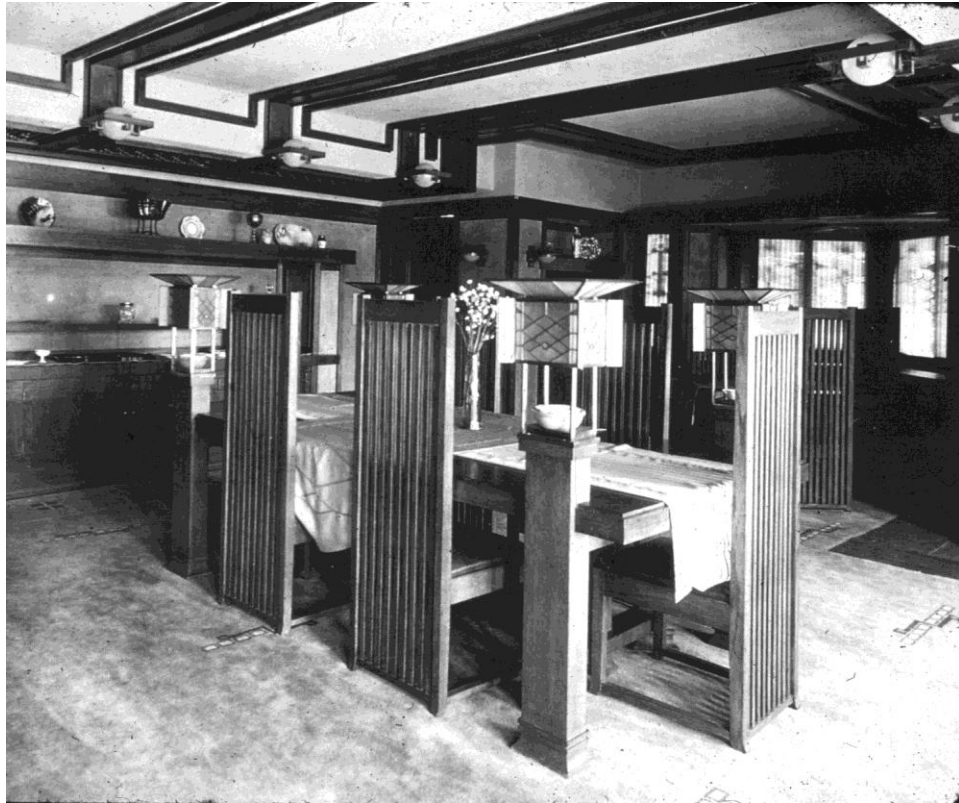


EMPFANGS-RAUM & MUSIK-ZIMMER
PANELS VON
HARVEY & MACDONALD
MACKINTOSH

© J. B. BUCHHEIM - GÖTTINGEN, 2014. SEITE 1000. ARCHITECTURE
REPRODUCTION: ANSTÄNDIG, NICHT VERBREITEN - 10000000



Charles Rennie Mackintosh, 1901/02



Frank Lloyd Wright, Robie House (Chicago), 1909



02.374



Maria Semenova (Russian), c.1900

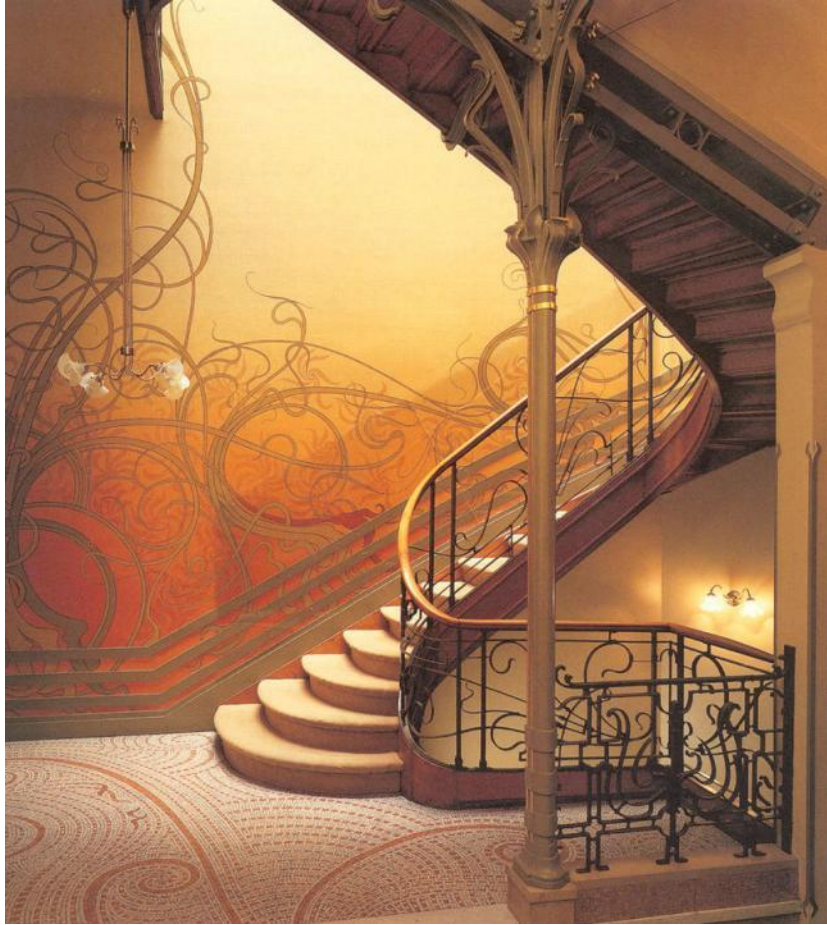


Keeling & Co (English, Staffordshire), c.1900

DESIGN REFORM – Art Nouveau / 1890-WWI



Hector Guimard, Paris, 1900



Victor Horta, *Hôtel Tassel*, 1894



NOMA

L.C. Tiffany, 1900-10



NOMA

B.A. Wikstrom (New Orleans), c.1910

NOMA



2001.1

Gorham Co (Providence, RI), “Martele” Tankard, 1900



NOMA

Emile Galle', 1895



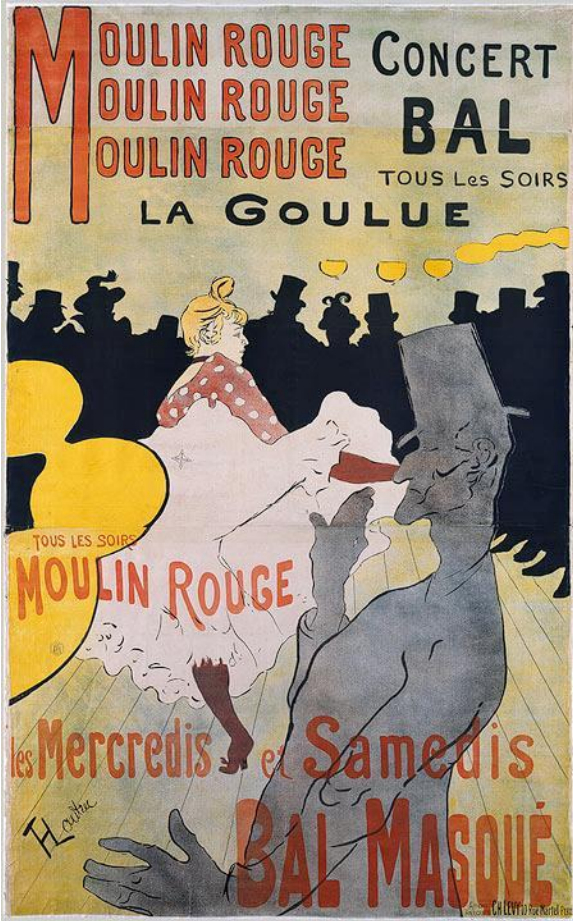
Van Briggie Pottery (Colorado), c.1900



George Hamm (French), c.1900



Alphonse Mucha (Czech), c.1900 (the Met)



Henri de Toulouse-Lautrec (French), 1891 (the Met)





....questions?